

Lumen Strip Projects Specification April 2007

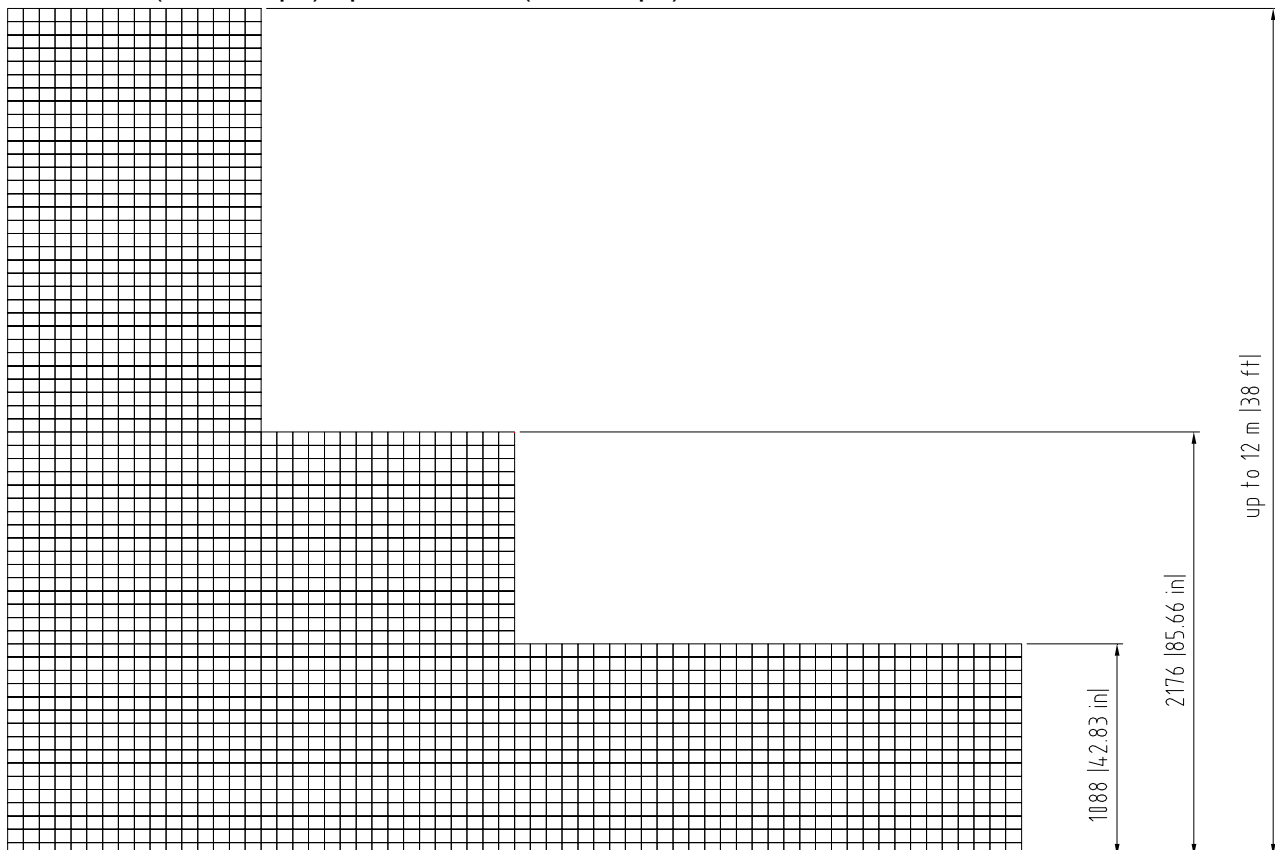
Overview

The Lumen Strip is the foundation component of our modular LED lighting system. Installations are customised to fit any interior brief, producing imaginative lighting atmospheres with inspiring designs using the combination of convex, concave, cylindrical or flat shapes; software controlled light effects; and a choice of lens colours and types over each LED. Lumen Strips also feature:

- Warm-white Power LED's
- State-of-the-art electronic infrastructure
- Software or Video input via DVI port

Size

Individual Lumen Strip modules each have a length of 1088 mm (42.83 in) – 12 m 38 ft) and a width of 34 mm (1.34 in). Installations (combinations of interconnected modules) may vary from 1 m² (10.76 sq ft) up to 900 m² (9688 sq ft) assembled size.



Configuration

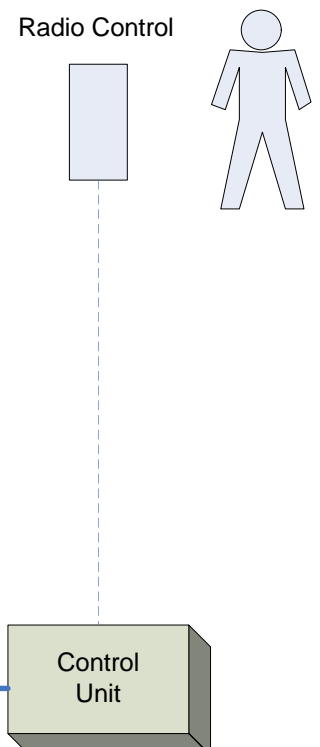
Project Size	Assembly Size	Control Unit	Remote Control	Expander Unit	DVI Unit	Software Application
Small	1-12 m ² (10-139 sq ft)	Required	Included in delivery	Not required		<ol style="list-style-type: none"> 1. Stand-alone with software application 2. External DVI source 3. Both
Large	12-900 m ² (139-9688 sq ft)	Required	Included in delivery	Required		<ol style="list-style-type: none"> 1. Stand-alone with software application 2. External DVI source 3. Both

Sample Configuration of a Small Project

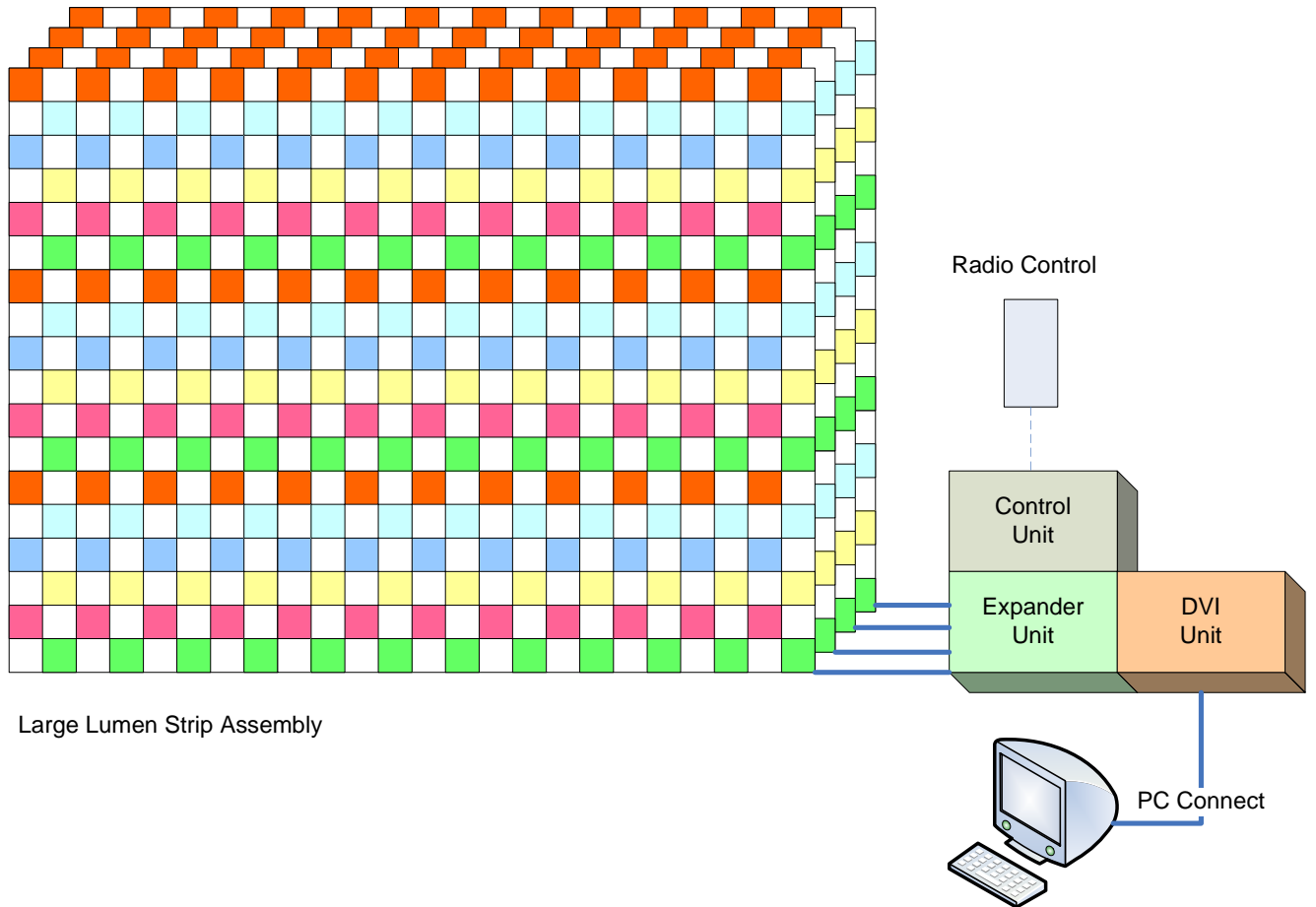


Small Lumen Strip Assembly

RJ45 Cable

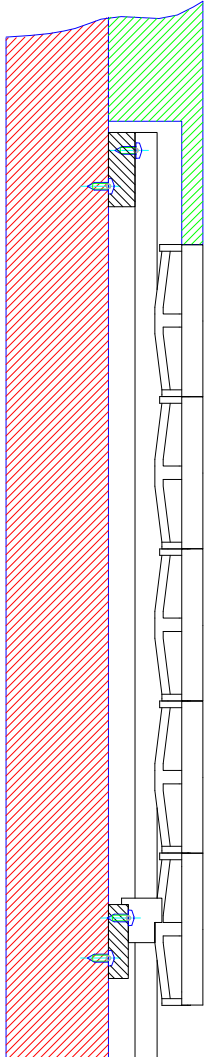
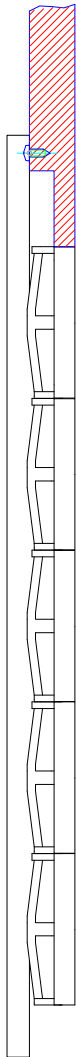
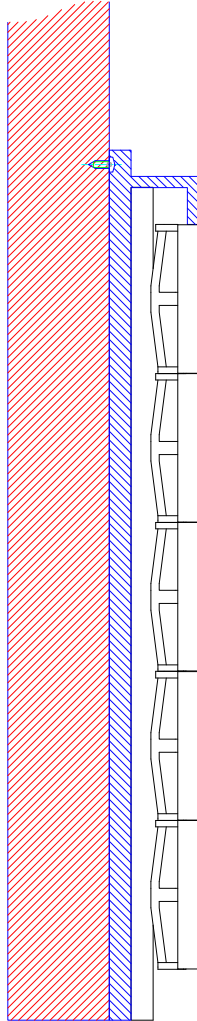


Sample Configuration of a Large Project



Large Lumen Strip Assembly

Mounting

Front	Rear	Pre-Assembled
<p>Each Lumen Strip is fixed with screws and one or more patented clips. Mounting is undertaken from the front of the wall or pillar.</p>	<p>Each Lumen Strip is fixed with screws from the rear of the wall.</p>	<p>Lumen Strip comes as a pre-assembled module. Mounting is undertaken from the front of the wall.</p>
 <p>A cross-sectional diagram showing a red hatched wall on the left and a green hatched wall on the right. A white Lumen Strip is mounted between them. Two screws are shown passing through the red wall into the Lumen Strip. Two blue clips are shown on the right side of the Lumen Strip, securing it to the green wall.</p>	 <p>A cross-sectional diagram showing a red hatched wall on the left and a white Lumen Strip on the right. A screw is shown passing through the red wall into the Lumen Strip. A blue clip is shown on the left side of the Lumen Strip, securing it to the red wall.</p>	 <p>A cross-sectional diagram showing a red hatched wall on the left and a blue hatched wall on the right. A white Lumen Strip is mounted between them. A blue clip is shown on the right side of the Lumen Strip, securing it to the blue wall.</p>

Specification

Technical Area	Specification
Size of glass inlays	Height x Width: 30 mm x 30 mm (1.18 in x 1.18 in) Depth: 1.0 – 4.5 mm (0.18 – 0.4 in)
Pixel pitch	34 mm (1.34 in) 928 LED / m ²
Installation depth	29 mm – 90 mm (1.14 – 3.54 in)
Smallest radius	150 mm (5.9 in)
Material of frame and faceplate	Polycarbonate (Macrolon) Fire proofing: V0 according UL 94 V
Material of acrylic inlays	Röhm Plexiglas (PMMA) Fire proofing: DIN 4102-B2
LED	Warm-white Power LED
LED manufacturer	Nichia, Japan
Guaranteed life expectancy of LED's	50000 hours
Maximum LED brightness	25.5 lm (Lumen) / LED

Control Unit	Evado real-time embedded computing system: <ul style="list-style-type: none"> - 75-90 fps (frames per second) - 16 bit brightness control (65536 different brightness values) - Video software application or DVI interconnection
Power input	Variable input 80-500 W/m ² Average application 120-200 W/m ²
Weight without inlays	14,5 kg / m ² (32 lb / 10.76 sq ft)
Weight of inlays	Crystal glass = 8,3 kg / m ² (18,3 / 10.76 sq ft) Acryl glass = 4,2 kg / m ² (9,3 / 10.76 sq ft)
Certification	CE and RoHS compliant
Power supply voltage	85-264V
LED infrastructure voltage	5V
Patent	International patent filed
Warranty	1 year